

№21

ONE-BEDROOM
APARTMENT

Central heating, water and sewerage systems. Each of the apartments has separate manual heating control, besides, the required temperature for comfort can be adjusted separately in each room.

Each of the apartments is equipped with Mitsubishi Electric heat recovery ventilation system, which ensures continuous flow of fresh air and has the function that allows the client to adjust the conditioning system as they please.

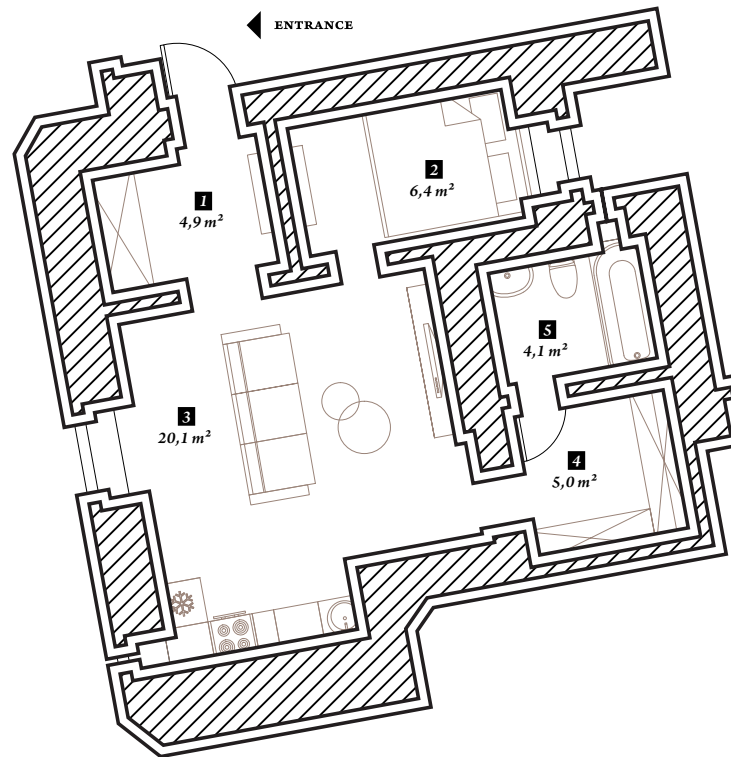
All apartments are also equipped with centralized fire alarm, and it is possible to set up a safety alarm system in each of them also.



ELIZABETH

Anno 1899 × Riga

3rd FLOOR



| THIRD FLOOR | |
|-------------------------|----------------------|
| ROOM TITLE | AREA, M ² |
| 1 ENTRANCE HALL | 4,9 |
| 2 BEDROOM | 6,4 |
| 3 LIVING ROOM & KITCHEN | 20,1 |
| 4 WARDROBE | 5 |
| 5 WC | 4,1 |
| TOTAL: | 40,5 |

HEIGHT OF CEILINGS TILL
CONCRETE OVERLAY: 3,73 M

3rd FLOOR



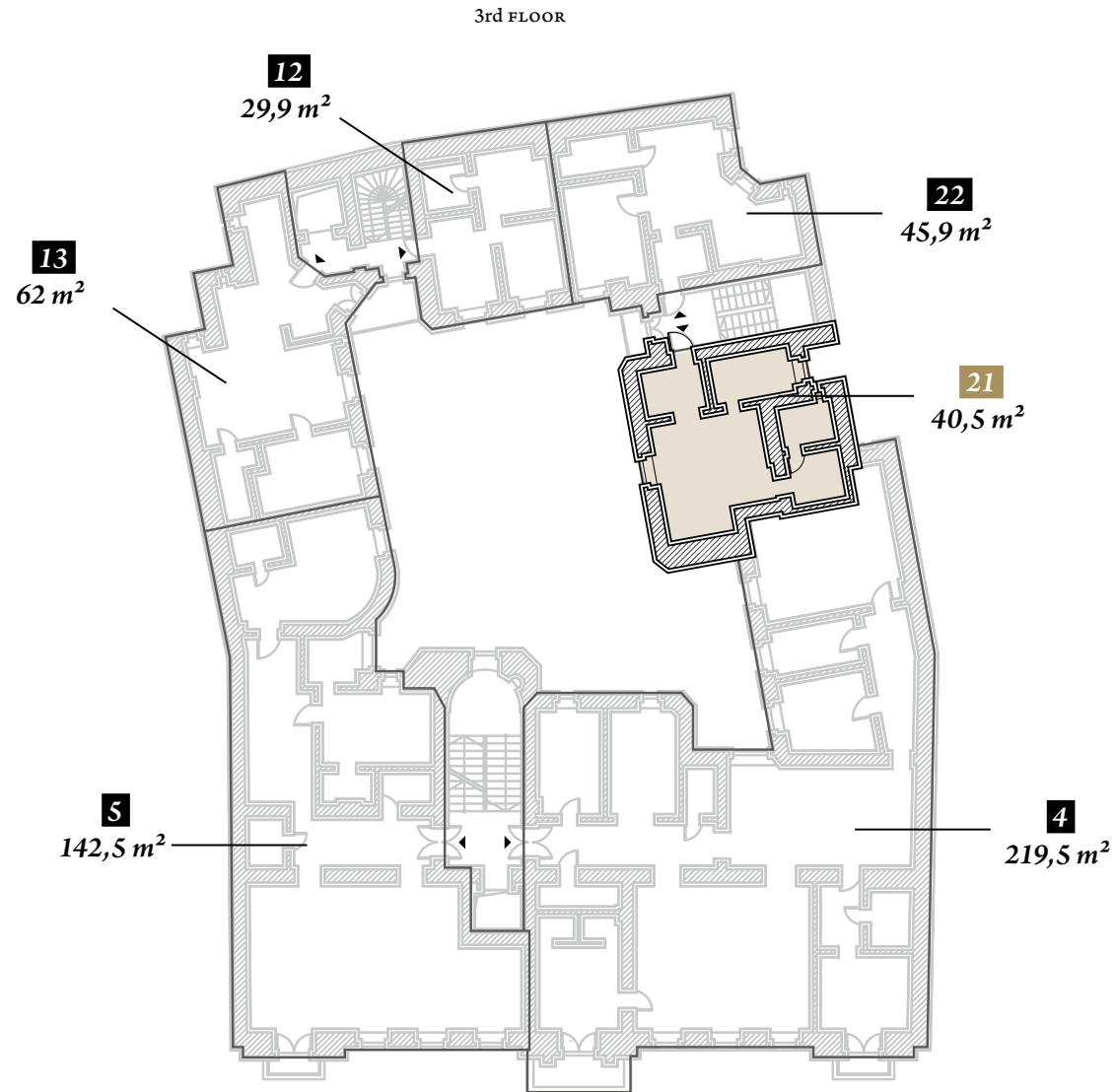
ELIZABETH STREET



ORDO
AGENCY

PH. +371 670 990 99
info@ordoag.lv
K. Ulmana gatve 119,
Marupe, Latvia

№21




ELIZABETH
Anno 1899 × Riga




ORDO
AGENCY

PH. +371 670 990 99
info@ordoag.lv
K. Ulmana gatve 119,
Marupe, Latvia