

№2

**APARTMENT WITH A BAY WINDOW AND A VIEW TO THE ELIZABETES STREET AND THE RIVER DAUGAVA**

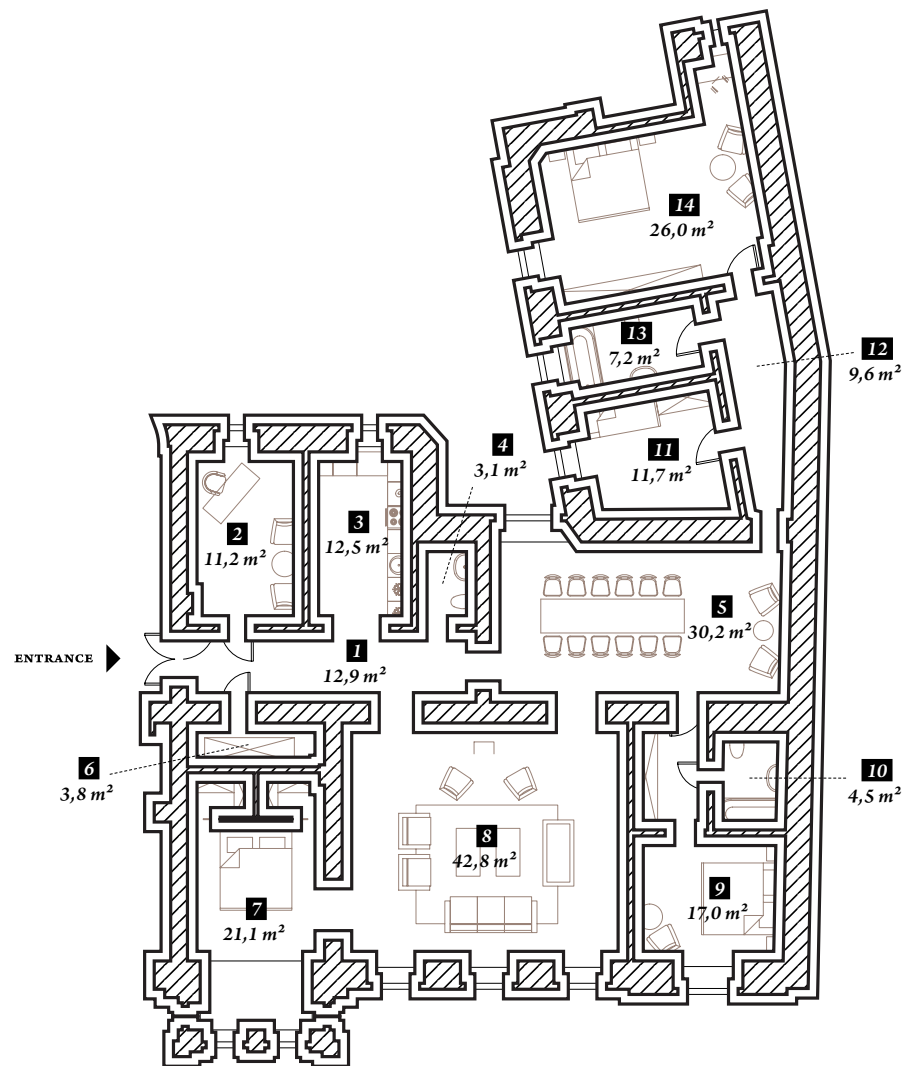
Central heating, water and sewerage systems. Each of the apartments has separate manual heating control, besides, the required temperature for comfort can be adjusted separately in each room.

Each of the apartments is equipped with Mitsubishi Electric heat recovery ventilation system, which ensures continuous flow of fresh air and has the function that allows the client to adjust the conditioning system as they please.

All apartments are also equipped with centralized fire alarm, and it is possible to set up a safety alarm system in each of them also.

It is possible to build a fireplace in this apartment.

2nd FLOOR



SECOND FLOOR	
ROOM TITLE	AREA, M <sup>2</sup>
1	ENTRANCE HALL 12,9
2	OFFICE 11,2
3	KITCHEN 12,5
4	UTILITY ROOM 3,1
5	DINING ROOM 30,2
6	WARDROBE 3,8
7	BEDROOM 21,1
8	LIVING ROOM 42,8
9	BEDROOM 17
10	WC 4,5
11	BEDROOM 11,7
12	CORRIDOR 9,6
13	WC 7,2
14	BEDROOM 26
<b>TOTAL: 213,6</b>	

HEIGHT OF CEILINGS TILL CONCRETE OVERLAY: 3,81 M

2nd FLOOR



ELIZABETES STREET



**ELIZABETH**

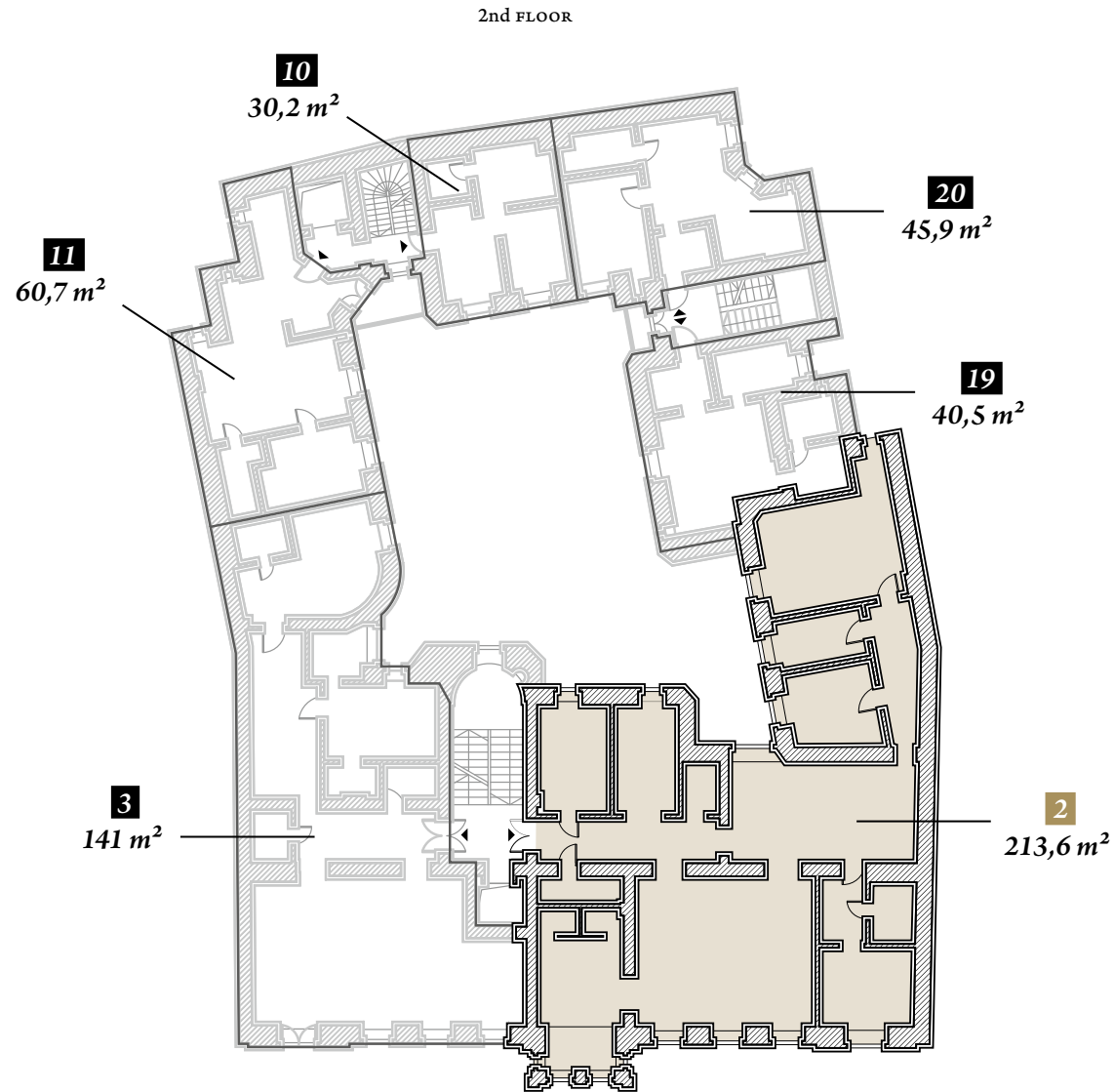
Anno 1899 × Rīga



**ORDO**  
AGENCY

PH. +371 670 990 99  
info@ordoag.lv  
K. Ulmana gatve 119,  
Marupe, Latvia

№2



ELIZABETH  
Anno 1899 × Riga



PH. +371 670 990 99  
info@ordoag.lv  
K. Ulmana gatve 119,  
Marupe, Latvia